

**NS6130-10-1166**

# CU FOIL

## Graphene

### Quick Facts

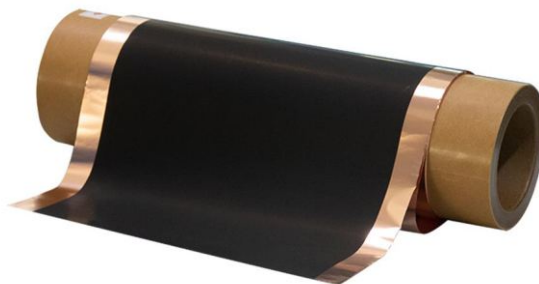
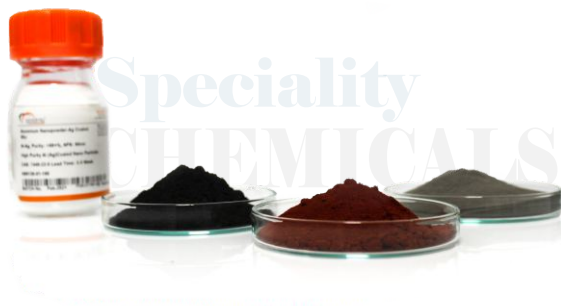
Product	:	Cu Foil Graphene
Stock No	:	NS6130-10-1166
CAS	:	7440-50-8
Molecular Formula	:	Cu
Purity	:	99.9%

**Purity**  
99.9%

Copper foil is the base copper thickness applied on outer and inner layers. The Copper Foil can be pre-attached by the laminate to a base material core or it can be introduced in a multi layer board as copper foil before pressing. On inner layers the final copper thickness remains that of the base copper foil. On outer layers we deposit extra 20-30µm copper on the tracks during the galvanic process for plating through the holes.

### Applications:

- Copper foil is used in the printed circuit boards incorporated into telecommunications equipment such as PCs and mobile phones, the current collectors used in lithium ion secondary batteries, and as the electromagnetic wave shield material in PDPs (plasma displays).
- Copper foil is widely used in professional and DIY stained glass projects, stained glass repair, electronic industries, and is used for its superior conductivity in some automotive parts.
- In addition, copper foil is also used in for easily bending components ,for example, manufacturing pins, gaskets, screens, radiators, conduits, bore meter sprits, transformers , and cable connectors.



Follow us:



| [www.nanoshel.com](http://www.nanoshel.com) | [sales@nanoshel.com](mailto:sales@nanoshel.com)



ISO 9001:2015  
CERTIFIED COMPANY

**INTELLIGENT MATERIALS PVT LTD**  
Derabassi  
Punjab (140507)  
INDIA

+91 9779 550077, 9779238252

**NANOSHEL UK LIMITED**  
Chapel House,  
Chapel St Cheshire,  
CW12 4AB United Kingdom

+44 (0) 74 105 488, +44 203 137 5187

**NANOSHEL LLC**  
3422 Old Capitol Suit  
1305 Wilmington DE - 19808  
United States

+1 646 470 4911